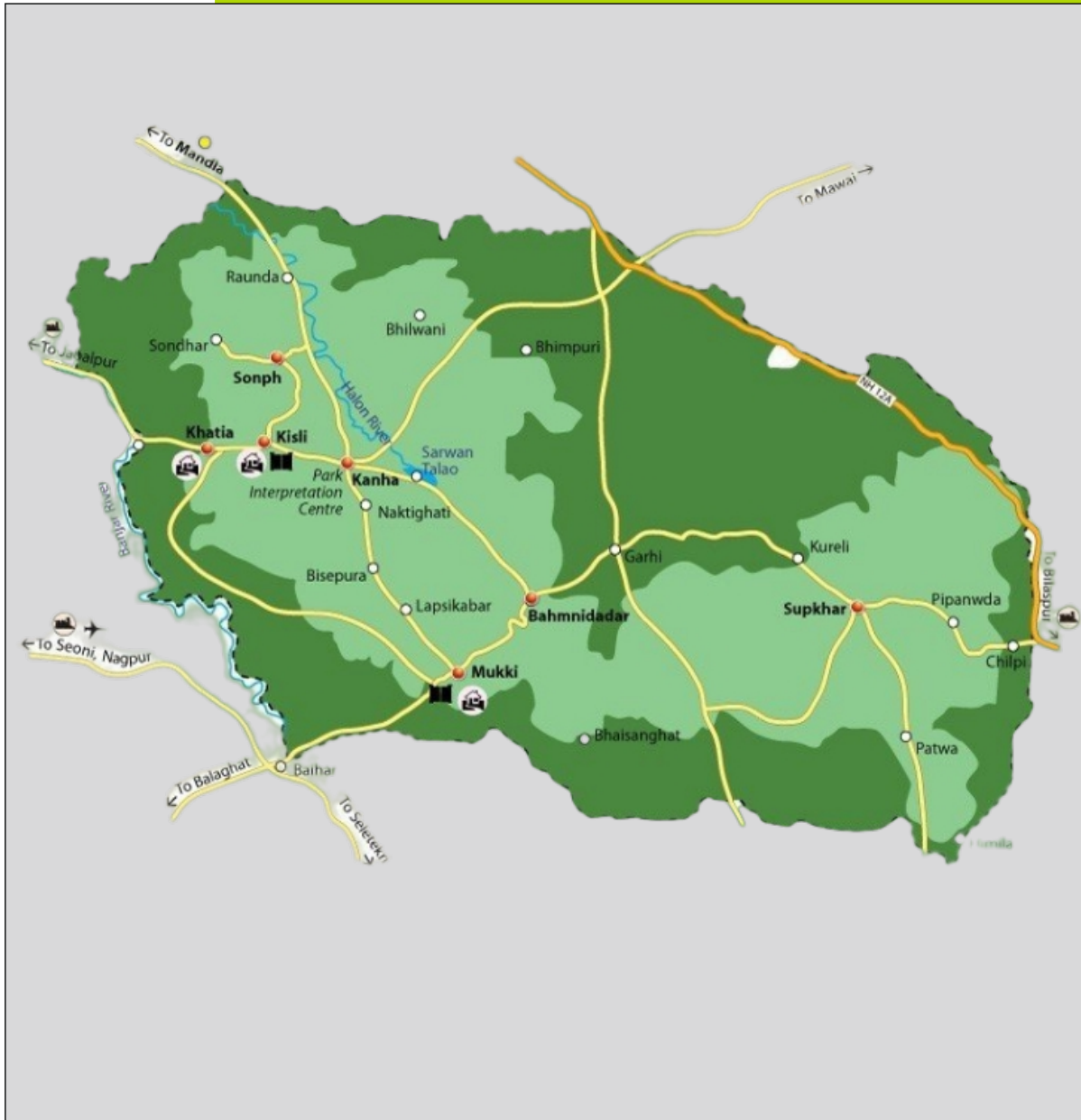


# EMINENT KANHA...



Map is only for representational purposes, not to scale.

## Road map

5 nts. 6 days.

- Day 1** ● **Departure from Pune / Mumbai - :**  
In the morning, board a train from Pune for Mumbai and then to Jabalpur. Overnight Journey.
- Day 2** ● **Jabalpur - Bhedaghat - Kanha :**  
Arrive at Jabalpur in the morning. Visit Bhedaghat, have breakfast. Visit Dhuadhar falls and proceed to Kanha. In the evening, Go for a walk in nearby area. Overnight Stay at Kanha.
- Day 3** ● **Kanha :**  
Early in the morning, go for First Jungle Safari. Take rest. In the afternoon, go for Second Jungle Safari. Overnight Stay at Kanha.
- Day 4** ● **Kanha :**  
Early in the morning, go for Third Jungle Safari. Take rest. In the afternoon, go for Forth Jungle Safari. Overnight Stay at Kanha.
- Day 5** ● **Kanha - Jabalpur :**  
Early in the morning, visit jungle for the 5th time. After breakfast, proceed to Jabalpur. Board a train to Pune or Mumbai. Overnight Journey.
- Day 6** ● **Arrival at Pune / Mumbai :**  
Reach Pune or Mumbai in the morning.

**Kanha Tiger Reserve**, also known as Kanha–Kisli National Park, is one of the tiger reserves of India and the largest national park of the state of Madhya Pradesh. The present-day Kanha area is divided into two protected areas, Hallon and Banjar, of 250 and 300 km<sup>2</sup> (97 and 116 sq mi). Kanha National Park was created on 1 June 1955 and was designated a tiger reserve in 1973. Today, it encompasses an area of 940 km<sup>2</sup> (360 sq mi) in the two districts Mandla and Balaghat. Together with a surrounding buffer zone of 1,067 km<sup>2</sup> (412 sq mi) and the neighbouring 110 km<sup>2</sup> (42 sq mi) Phen Sanctuary, it forms the Kanha Tiger Reserve, which is one of the biggest in the country. This makes it the largest national park in central India. The park hosts Bengal tiger, Indian leopard, sloth bear, barasingha and dhole. It is also the first tiger reserve in India to officially introduce a mascot, Bhoorsingh the Barasingha.

The vistas and encircling rich meadows, as well as the woody strands and deep maroons of woods, deliver splendid sightseeing possibilities for nature enthusiasts. The perfectly clear streams within the deep forest purify the environment and make the fauna unrivalled, making the area more stunning and appealing. This vibrant region motivated famous author Rudyard Kipling to write "The Jungle Book". The temperature during summers may reach 43° C in Kanha due to the tropical temperature, but the central highland region of Madhya Pradesh is also notably soaked with heavy monsoon pours, with an average precipitation of 1,800 mm, making the surroundings more picturesque and emerald. On the converse, winters in Kanha's deep woods may be more chilling, with temperatures down to -2°C. Kanha National Park is best accessible via flight, rail and road. One can opt for any means of transportation to reach the park.

Flight: Nagpur Airport is the nearest one – 255 kilometres from Kanha National Park.

Rail: The closest railway station is at Jabalpur – 167 km from the park.

2/3, Erandwane, Opp. SNTD College, Karve Road, Pune 411004. Maharashtra.India

9860578663 / 9325904071 / 9028793783 / 9881138909

## Day - 1

Pune / Mumbai to Jabalpur


Our wildlife tour to Kanha. begins with the AC Train journey.

Overnight Journey.

 Train Journey

 700 mtrs.

 1,020 kms.

 16-20 hours.

 No Meals Included.



# Kanha

### Info :

Located in the Mandla and Balghat districts of Madhya Pradesh, the Kanha Tiger Reserve where you can see tigers very often. The grasslands and deciduous forests supports over 25 species of mammals and 250 species of birds. Kanha was created in 1933 and declared as a national park in 1955. Kanha Tiger Reserve, having 1,945 sq. kms. area consisting Kanha, Kisli, Mukki, Sarhi as core zones. Kanha National Park is nestled in the Maikal range of Satpuras in Madhya Pradesh, the heart of India.



## Day - 2

### Jabalpur - Kanha

Reach Jabalpur at 06:00 hrs., proceed to Bhedaghat for boating through Marble rocks.

After Breakfast, proceed to Dhuadhar waterfalls situated on Narmada river. At around 12 noon proceed to Kanha National Park.

Reach Kanha at around 16:00 hrs. fresh n up and take rest.

Enjoy resort activities in the evening. Have Dinner at around 20:30 hrs. Go to bed at 22:00 hrs..


Overnight at Kanha.

 Hotel Accommodation

 600 mtrs.

 160 kms.

 04-05 hours by AC Vehicle.

 Breakfast, Lunch & Dinner Included.



### Sightseeing :

Experience to witness the marble rocks adjoining the graceful Narmada River in Bhedaghat, Jabalpur. These soaring white rocks, are known to magically change shapes as you sail along the river. Treat yourself with a boat ride at the marble rocks. The boatman regales you with a witty description based on his imagination and explains about vicinity in the most creative way. The tranquil Narmada flows through high marble rocks and at a short distance, sited the remarkable spectacle of nature; Dhuandhar falls. The waterfall has been named so because of the smoky appearance of the water falling off the cliff with utmost force.








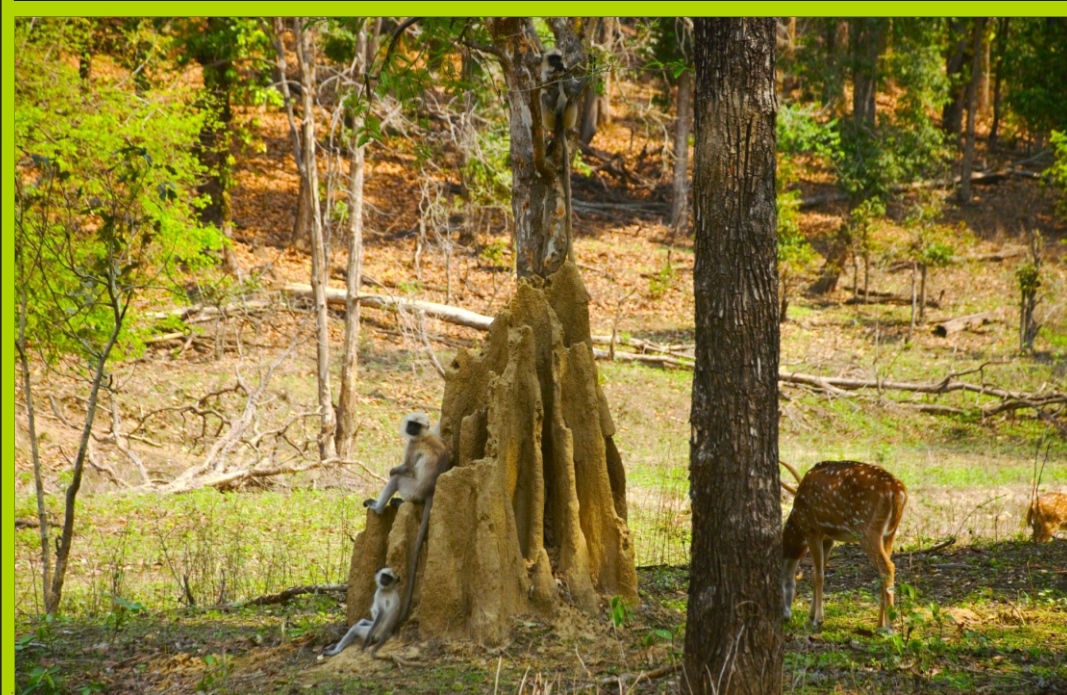
## Day - 3

### Kanha

Early in the morning you will get an wakeup call at about 0515 hrs. Tea / Coffee & Biscuits would be ready. You will have the opportunity to delve into the awesome wildlife with a highly knowledgeable forest guide. You will return to lodge by 11 a.m. after First Safari. Take Rest. After Lunch, explore the other area of the National Park which will be our Second Jungle Safari. Come back to resort at 19:00 hrs. At High tea, we will be having interactive session on wildlife. Have Dinner at around 20:30 hrs. Go to bed at 22:30 hrs..

#### Overnight in Kanha.

-  Hotel Accommodation
-  800 mtrs.
-  -----
-  5 hrs. Morning.  
3.5 hrs. Afternoon.
-  Breakfast, Lunch & Dinner Included.



### Sightseeing :

Jungles of Kanha with their pristine floral and faunal denizens are considered to be a Nature's Paradise by nature lovers, tourists, conservationists or anyone else who is even just remotely connected to Jungles. Kanha Tiger Reserve is bestowed with rich biodiversity and for an enthusiast or someone who just wants to explore into the deep woods, Kanha Tiger Reserve has to be on their bucket list. The tiger conservation project has made Kanha tiger reserve a model example in the terms of ecological conservation.



## Day - 4

### Kanha

Early in the morning, Third Jungle Safari will add more knowledge about wildlife and superb landscapes of Kanha.

Come back to resort at 11:00 hrs. Take Rest.

After Lunch, take rest.

In the afternoon, explore another area of the Park with our Forth Safari.

Come back to resort at 19:00 hrs.

At High tea, we will watch some interesting films on Kanha.


Have Dinner at around 20:30 hrs. Go to bed at 22:30 hrs..


#### Overnight at Kanha.

 Hotel Accommodation

 800 mtrs.

 -----

 5 hrs. Morning.  
3.5 hrs. Afternoon.

 Breakfast, Lunch & Dinner Included.

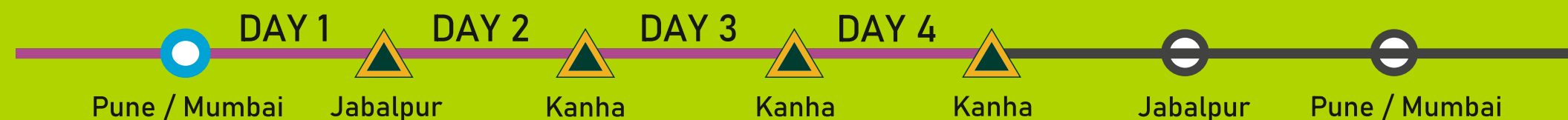


© Aditya Palande



### Sightseeing :

This enormous wilderness is home to many different permanent and migratory birds, including peacocks and vultures, as well as leopards, Indian bison, langurs, wild boar, and jackals along with the mightiest big cat – The Royal Bengal Tiger. Apart from Tigers, Kanha National Park boasts of a diverse and rich flora and fauna. In total, Kanha Tiger Reserve has 4 zones and 4 entry gates from where you can enter and explore this beautiful forest.



## Day - 5

### Kanha - Jabalpur

Early morning's Fifth and Final Safari will be our last chance of trailing the various Flora and Fauna. Come back to resort at 11:00 hrs. After fresh n up and lunch, we will transfer to Jabalpur. Reach Jabalpur Railway station and board the train to Mumbai.

#### Overnight Journey.

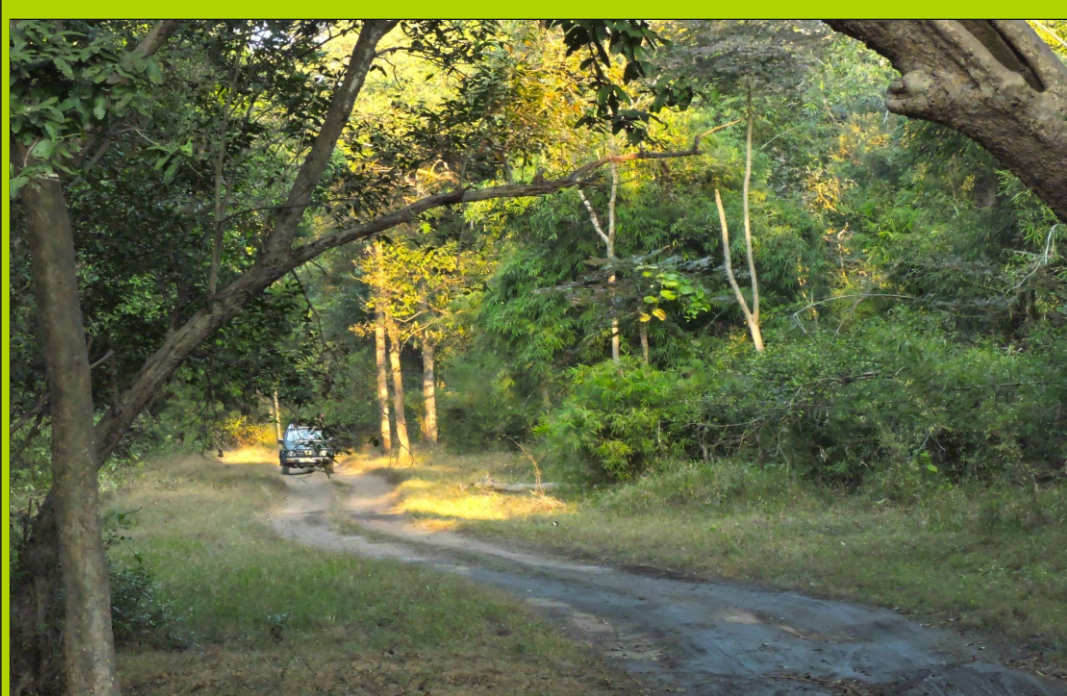
 Train Journey

 300 mtrs.

 1,200 kms.

 16 hours.

 Breakfast & Lunch Included.



### Sightseeing :

Apart from supporting a viable population of the tiger, the National Park has also distinguished itself in saving the highly endangered hard ground barasingha (*Cervus duvauceli branderi*) from extinction, and has the unique distinction of harbouring the last world population of this deer species. There is a well maintained museum inside the Kanha National Park. This is the place from where you can gather information about the correct topography of the park and details about all the species in the park.



## Day - 6

Arrival at  
Pune / Mumbai

Reach Mumbai in the noon.  
Start the journey to Pune by road.



Our unforgettable trip to Kanha National Park has come to an end, but the lovely memories of this incredible Forest will stay with us. Though spotting tigers in the park's lush forests is difficult and left to chance, we were privileged to encounter Kanha's diverse mammals, vibrant birds, towering trees, and bountiful flowers and fruits. As we return home with these experiences forever etched in our minds, let us continue to honor the importance of conserving nature for future generations.










# Tour Cost

5 nts. 6 days



## ⇒ Cost Includes :

-  Double / Triple Sharing Accomodation.
-  Breakfast (4), Lunch (4) & Dinner (3) included.
-  AC Vehicle for Road transfers from Jabalpur to Jabalpur.
-  5 Jungle Safaris ( 4 Core & 1 Buffer ) with open Gypsy.
-  3 tier AC railway ticket from Mumbai to Jabalpur and back by Garibrath Exps..

## ⇒ Cost Excludes :

- Φ Any Airfare, Busfare, Trainfare not mentioned in the itinerary.
- Φ Cost for optional tours, upgradation charges.
- Φ Any personal exps. i.e. Phone calls, Laundry, Soft drinks, Mineral Water, Tips, Porter chgs. etc.
- Φ Expenses incurred due to change in Oil prices, mishaps, landslide, strikes, political unrest, govt. policies.
- Φ Meals / food other than specified.
- Φ The items which are mentioned in the ' Cost Includes'.

**Please note : The tour cost may increase if the Fuel prices, Forest authorities, Railway authorities increases their rates.**

## 2024 - 2025 Seasons

Per Person  
DBL Sharing

Per Person  
TRPL Sharing

31 Oct – 05 Nov 2024

Rs.29,000/-

Rs.26,000/-

11 Feb - 16 Feb 2025

Rs.29,000/-

Rs.26,000/-

25 Mar - 30 Mar 2025

Rs.29,000/-

Rs.26,000/-

17 Apr - 22 Apr 2025

Rs.29,000/-

Rs.26,000/-

15 May - 20 May 2025

Rs.29,000/-

Rs.26,000/-

05 Jun - 10 Jun 2025

Rs.29,000/-

Rs.26,000/-

**2/3, Erandwane, Opp. SNTD College, Karve Road, Pune 411004. Maharashtra.India**

**9860578663 / 9325904071 / 9028793783 / 9881138909**



flycatcheradventures

[www.flycatcheradventures.com](http://www.flycatcheradventures.com)

[www.magixholidays.com](http://www.magixholidays.com)